



Celebrating our 70th Year Anniversary



A Safety Letter for the Employees and Friends of Beach Transportation



Greg and Scott Beach, sons of Bob and grandsons of company founder Ray Beach.

By Greg Beach
Vice President

We're heading into one of my favorite times of the year. The silent snow begins to swirl on the wings of a brisk Montana wind and the hustle and hum of busy people adds a delightful spice, especially as I see little acts of courtesy and kindness in the midst of life's pressures. Many of us have concerts, school plays and church programs to attend, shopping to do and cards to send. In all of these activities we greet and share news with folks we haven't seen for months or years. It is, indeed, a season in which we should all count our blessings as we have much to be thankful for, despite the seemingly endless new stories telling us otherwise.

As our work days begin and end in darkness and temperatures dip, it's also a season when we must be especially attentive to the task at hand, to being safe, vigilant drivers and attendants. Fog often shrouds our valley, and the same snow that replenishes our land and

From the Driver's Seat

our spirits makes driving two blocks difficult.

Dense fog can blind us to other vehicles and to pedestrians, and the snow and ice can make our loading and unloading areas

an invitation for tragedy. It's a time when courtesy and care, so appropriate in all seasons, become an absolute necessity.

I'm grateful for all our drivers who pay extra attention and use caution, for our attendants who watch and assist our passengers as they enter and leave buses, and to our shop people, who do such a good job of keeping the fleet rolling.

I am also reminded, especially at this time of year, that each of us is given unique gifts by our Creator to make this world better for our families, our schools, our state and our nation. God has given each one of us a special gift that truly manifests itself in service to others. Thank you for bringing your special gifts to our organization and thank you, in advance, for providing safe, reliable transportation to our young people.

As many of you are aware, public service often goes unnoticed, especially the many hours of time and effort required. We are, however,

keenly aware of your dedication and commitment. Know that you make a difference and play an important role, and can be proud of your contribution to the success of countless young people. Scott and I appreciate each and every one of you for the fine job that you do.

May all of you be blessed, and let us reveal spirit in small acts that cherishes life and love. May all of you be blessed with a joyous and happy Christmas and New Year, and remember that not only at Christmas, but throughout the year, the joy and love that you give to others is the joy and love that comes back to you.

Reminders:

- Please use the safe walking paths, walk slowly, and wear appropriate shoes.
- Please keep your route current by drawing an erasable line through those stops that are not used.
- Be perfect in checking for sleeping children after every run.
- Always double check the danger zone before moving your bus.
- Maximum idle time is 5 minutes between runs and while warming up your bus.

Inside this issue:

From the GM	2
Distinguished Service Award	2
Tracie Hoffman: Preparing for winter	3
Support Your Sub	4
Employee Profile: Nancy Allred	5
New Team Members	5

From the GM:

By Bob Mitchell
General Manager

As I was updating the Driver's Board in the driver's lounge last week, I was compelled to write, "Please reinforce students for positive behavior." When I am driving a school bus as a substitute driver, I will always thank the youngsters for being good riders and almost always you can see the gratification in their eyes as they leave the bus. Sometimes we get stuck concentrating on the students who need to be disciplined on a daily basis. Spend some time thanking the good students, and don't forget to reinforce good be-

havior from the students who are challenging on a regular basis. From my experience, this is a great tool for helping a driver establish himself as a "nice person" to the students and gaining their respect.

As the general manager at Beach Transportation, I am put in the position of dealing with the many issues that it takes to run a very busy business on a daily basis. Sometimes the issues are tough and the decisions that we may have to make are hard. As I write my short column, I want to sincerely praise our employees for making Beach Transportation such a positive working environment. We have an incredible staff. We recognize that on a daily basis our responsibility is great.

Now, I sure do not want to treat everyone in the same way as the children that we transport, but the principle is the same. Great job to all and thank you all so much.

Before I conclude, I want to thank everyone in our great community for the prayers and support given to my family as my wife dealt with recent health issues. It has been overwhelming and so greatly appreciated. It appears that we are over the hump. We thank the good Lord each day for our blessings. As we approach the holiday season, we should all give thanks for the blessings in our lives. Do not get caught up in the negatives. Merry Christmas to all and Happy New Year!

Distinguished Service Award

Beach Transportation and Bob, Scott and Greg Beach were recently honored by Missoula Kiwanis Club as recipients of the club's *Distinguished Service Award*.



From Left to Right Bob McCue, John Rimel, Greg Beach

For many years, Beach Transportation has partnered with Kiwanis Club in serving Missoula area children.

The Beach family are long-time supporters of the Kiwanis pancake breakfast which raises fund for Kiwanis basketball program. In addition, Beach Transportation has provided discounted trips to many destinations, including the Flathead Lake sailing program for underprivileged youth.

The plaque reads "In recognition and appreciation of outstanding leadership and service to the community of Missoula."

Did You Know?

On a typical school day Beach Transportation transports over **3,000 students**, on over **100 routes**, traveling over **4,000 miles**.

Homemade Pie!



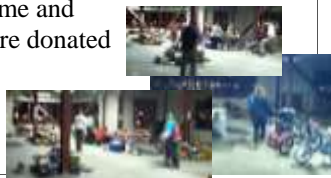
Every month Beach Transportation presents a safety meetings for drivers to refresh their skills on both driving and managing students. After the meetings employees are entered into a drawing for a variety of prizes. Thanks to Bev Solum a homemade pie has been added to the prize list. The winner has a choice of a homemade pie or a baked good. Bev makes the delicious choice and delivers it in person on the requested date.

Thank You Bev!



We would like to send out a big Thank You to everyone who donated time and

toys to Griz for Kids. Toys were donated at each entrance of the football stadium and on Beach Transportation's shuttle buses.



PREPARING FOR WINTER



By TRACIE HOFFMAN
Safety Director

Even when the weather is good, school bus drivers face many challenges transporting loads of rowdy students to and from school. In Montana winter conditions such as snow, freezing rain, and changing light conditions, push drivers to the height of their driving ability.

Now that winter has moved in, it's time to modify your driving habits to accommodate the hazardous conditions caused by winter weather. While we can't control the weather, we can be prepared for it.

Your first and best defensive driving technique for winter driving is to SLOW DOWN. A slow, cautious speed will give you more time to react to road conditions and to scan the road ahead for potential hazards and other drivers who may be having trouble steering or stopping.

When the roads become slippery it takes longer to stop, sometimes as much as 10 times longer. Increase your following distance to between 6-8 seconds at speeds of 40mph and less and 8-10 seconds at speeds over 40 mph. If you leave a good following distance, you can minimize sudden stops. At lights and stop signs, start stopping way



before you have to, and test the roadway for traction and stopping ability. Use caution with your brakes; don't slam them on but, rather, gently apply them.

Be mindful of places where ice may form. This may include not only intersections but shaded areas, bridge decks, and ramps. Also recognize places where snow may blow across the road and drift. Use extra caution in these areas. Prepare your vehicle by doing a good pre-trip. Be especially mindful of tire condition, keeping lights and windows clear and wipers in good condition and free from ice. Also keep your fluids topped off and check your hoses for cracks and leaks.

And last but not least, prepare yourself for the task of driving in the winter conditions. Get adequate rest. Winter driving requires more concentration and is more stressful on both mind and body. Dress for the conditions using layers of clothing and having shoes with good traction. Be extra cautious on the slippery steps and use the handrails. Walk slowly and carefully around your bus and when walking around the bus lot. Use the designated walking paths. Winter weather can make for challenging driving conditions, but it is something we can conquer through proper preparation, driving slowly and using proper defensive driving techniques.



Happy Birthday

January

- 2 Carol Duane
- 3 Irene Nelson
- 3 Roberta Thompson
- 5 Carl Ekstedt
- 5 Kevin Verlanic
- 5 Doug Washatko
- 8 Wendy Ramsey
- 9 Dorrie Beach
- 12 Becky Pamin
- 14 Nathan Farnes
- 15 Bob Beach
- 17 Diana Heinrichs
- 17 John Turman
- 20 Larry Brander
- 21 Tom Cook
- 21 Zoe Donovan

- 26 Lois Shaw
- 30 Tim Wagoner

February

- 2 Mike Officer
- 4 Ruth Jones
- 7 Clay Burtsfield
- 8 Wayne Wade
- 11 Hannah Hensen
- 12 Terry Sullivan
- 18 Katy Brady
- 21 Tom Anderson
- 23 Jennifer Hanson
- 24 Steve Smith
- 25 Jeff Haberman
- 27 Erica Richardson

March

- 1 Barry Williams
- 2 J.D. Mavity

- 4 Kathy Allen
- 5 Mike Pahl
- 5 Jimmie Patterson
- 5 Maggie Jenkins-Cooley
- 8 Scott Beach
- 8 Greg L. Miller
- 11 Clay Hopper
- 11 Susan Webster
- 12 Bill Wright
- 16 Jim Nelsen
- 17 Dennis Lastoskie
- 21 John Chinske
- 22 Spencer Berthelsen
- 22 Joyce Taliaferro
- 23 Bob Mitchell
- 29 Scott Whitmore
- 31 Cliff Laub

Walk Like a Penguin

- * Walk flat-footed with your center of gravity directly over the feet as much as possible.
- * Extend your arms out to your sides to maintain balance
- * Keep your hands out of your pockets
- * Watch Where you are stepping and
GO S-LO-W-L-Y!!!!!!
- * Take short steps or shuffle for stability
- * Wear shoe cleats for added traction



Thank You Goodfellow Drivers!
This years Goodfellows Drivers were Larry Allen and Leon Coleman. These drivers donated there time and ran a free shuttle from downtown to Fuddruckers on North Reserve.

Support Your Sub

BY GLEN MOYER

I drove the same bus route for 14 years, so I rarely was a “sub-driver.” As far as I knew sub-drivers were just people who drove boats under water (which makes as much sense as eating spaghetti through my nose). So when Bob Mitchell asked me to become a sub-driver this fall I was a bit uneasy about the job change.

“Really Glen, there’s not much to it,” Mitch explained, “You just fill in for drivers and attendants when they can’t be here. It’s sort of like being a substitute teacher.”

That didn’t settle me down much. When I was a kid, we did everything in our power to make sure our substitute teachers finished their day with us wishing they had chosen to drive boats under water instead of teaching. But Mitch could sell two campers to a guy who has only one truck – and then take his truck as the down-payment. So, naturally, he talked me into giving up my route and becoming a sub-driver.

Now, almost every day I’m in a different bus on a different route and it has been quite the learning experience. Next time I’ll discuss what it’s like to be a real life sub-driver but for now I’d like to give regular drivers a few tips on how you can help your sub-driver for when you are away.

***Update your route sheet.** Make sure your route sheet is accurate. If you have a stop that has no students make note of that on your sheet. I used to write my student’s names next to their stop on my route sheet; it helped me learn names, but now I know it can also

help subs big time.

***Train your students.** Finding stops is stressful enough for a sub; not knowing if students will load and unload safely adds to that stress. Having your students well trained is good for everyone.

***Recruit helpers.** Ask a couple of your best students to sit up front and help your sub through the route. Just remember to ask students who get off at the end of your route, not the beginning.

***Clean and fuel your bus.** Having a sub drive your bus is like having company in your home. Don’t embarrass yourself by making your sub drive a bus that is dirty and dusty or low on fuel.

Perhaps the best thing you can do for your sub is to reflect upon the first time you drove your route. Remember the pressure you felt making sure you transported each student safely to and from their stop; that’s how your sub feels covering your route. Whatever you can do to help ease that stress will be greatly appreciated.

Glen Moyer has been driving school buses and motor coaches for Beach Transportation for over 14 years. Contact him at: gmoyer@bresnan.net.



Look’n up the road

Please check the dry-erase board in the lounge for changes to this calendar.

Early Out: DeSmet and MCPS run on Early Out schedules every Thursday. Early Out schedules for Target Range and Woodman are as noted below and will be posted on the dry-erase board.

Safety Meetings to be announced; please check the flyers that will be posted around the office for updated information. Safety meetings are held in the lounge.

December

15 DeSmet, MCPS and Target Range—Early dismissal.

Winter Vacation—No school.

Dec. 22-Jan. 2 All districts

January

5 DeSmet, MCPS, and Target Range

12 Early Dismissal
DeSmet, MCPS, and Target Range
16 Early Dismissal
DeSmet, MCPS, and Target Range No School Martin Luther King Jr. Day
19 DeSmet, MCPS, and Target Range
20 Early Dismissal
Woodman no school
23 MCPS High School only—no school
26 DeSmet, MCPS, and Target Range
Early Dismissal

February

2 DeSmet, MCPS, and Target Range
Early Dismissal
9 DeSmet, MCPS, and Target Range
Early Dismissal
16 DeSmet, MCPS, and Target Range
Early Dismissal
20 *No School Presidents Day*
23 DeSmet, MCPS, and Target Range
Early Dismissal



Thank you Berton Horten for donating your time as a Griz Kidz driver. Griz Kidz is a non-profit organization that gives financially disadvantaged children the opportunity to go to a home Grizzly football game.



Daylight Savings
March 11

March

1 DeSmet, MCPS, and Target Range
Early Dismissal
8 DeSmet, MCPS, and Target Range
Early Dismissal
15 DeSmet, MCPS, and Target Range
Early Dismissal
22 DeSmet, MCPS, and Target Range
Early Dismissal
23 *Woodman No School*
27 Target Range Early Dismissal
28 Target Range Early Dismissal
29 *MCPS, Target Range, and DeSmet Half Day*
30 *MCPS and DeSmet No School*
25 *Woodman No School*

April

2-6 *No School Spring Break*
12 DeSmet, MCPS, and Target Range
Early Dismissal
13 MCPS High School Only No School
19 DeSmet, MCPS, and Target Range
Early Dismissal

Allred passionate about family, work

BY TOM ANDERSON

Driver Nancy Allred says she loves her work with Beach Transportation Co. In fact, she says, she is passionate about it. "I like the people; they're a good crowd," she said recently. "There's a good variety, and I like to see what's going on around town."

Nancy noted, however, that her family roles, mother, daughter and grandmother, are what are most important to her. "That's my number one thing," she said. Her eyes flashed, and her smile widened whenever she talked about her family. Her daughter Jennifer was married this fall, her son Jeremy is now an accountant in Missoula and her youngest child, Jami, is about to make her a grandmother for the second time.

Her family has close ties to Beach Transportation Co. Jami's husband, David Pfile, and Jeremy both drove school buses for Beach while they were in college. Jennifer also was a bus attendant at Beach.

Nancy's family values extend to the children she drives. "I like kids," she said, adding that she and Wendy Ramsey, the attendant on her bus, M57, strive for a positive, safe environment for their students. Grinning, she imitated the excitement a student shows many afternoons when he looks for her bus, hollering, "Nancy, Nancy."

Ten years ago, after Nancy started at Beach as a school bus attendant, Ray Robertson, who was then the company safety director, asked Nancy to drive and trained her. She added thanks for the help that Ray, Cindy Marcum, the former special needs transportation director, and current Safety Director Tracie Hoffman have given.

A favorite Beach memory, Nancy said, was stacking and sorting toys after the Griz for Kids Toy Drive, in which Missoulians donate toys each year to Missoula agencies such as Youth Homes, Inc. and the Watson's Children Center. These agencies then distribute the toys to the disadvantaged youths with whom they work.

Nancy's other interests include horseback riding (she owns three horses)

and playing the violin. Both were influenced by her mother, who, when Nancy was growing up, insisted that she practice her music before she could go riding.

good laugh about the commotion they caused.

Reflecting on her childhood and her work at Beach, Nancy emphasized, "Every child should be a child." Chil-



Driver Nancy Allred celebrates the Sept. 29 wedding of daughter Jen in Salt Lake City. From left: daughters Jami Pfile and Jen Willett, Nancy and son Jeremy. Photo courtesy of Nancy Allred.

Nancy said that she is happy that she practiced, as she has opportunities to play "fantastic music" with the Missoula Symphony Orchestra. The music gives her a "reverent feeling," and is another family experience, as her sister Susan plays cello in the orchestra and her mother Dorothy played violin, retiring two years ago.

Nancy and her siblings helped her parents celebrate their sixtieth anniversary this fall by taking them to Washington, D. C. Highlights, she said, included tours of many historical places, seeing the presidential contenders and a having wheelchair crash on an escalator at the Kennedy Center. Nancy explained that the family used wheelchairs to help her mother and sister get around. Unable to get an elevator, they used an escalator. Nancy said that her mother made it just fine, and her sister, who was recovering from surgery, was able to stand to ride the escalator. However, her wheelchair got stuck and ended up being flung from the escalator. No one was hurt, and the family had a

children should feel safe and protected, she said. Adding that she and Wendy "like to keep the kids laughing," she said, "I think they feel welcome and safe" on the school bus.

Welcome, New Team Members!

Please take some time to talk with and welcome these folks to the Beach Transportation family, and check the bulletin board in the lounge for updates and photos.

Attendants: Daniel Cloninger, Douglas Duncan, Marianne Fehr, Jessica Klette, Wendy Ramsey, Nicki Mielke, Margaret E Jeakins-Cooley, Spencer Bertelsen, Erica Richardson, Jennifer Hanson

Drivers: Scott Meyers, Durward (Butch) Waddill, Randall Stobb, Philip Barba, Gretchen DuMars, Andrew Lassila, LeGrande Harvey, Leah McBrairty, Thomas Cook, Nicole Anderson, Max Boese



Beach
Transportation Co.

We Deliver!

825 Mount Avenue
Missoula, MT 59801

406.549.6121

406.549.5445

beachtrans@beachtrans.com



Winter Tips

Bus safety reminders

From your friends at Beach Transportation



RADIO AND TV

During severe weather conditions, radio and TV stations broadcast information about school closures, school bus routes and road conditions. If no closures are mentioned buses run at regular times

PARENTS, PLEASE:

- * Have your students dress in appropriate clothing.
- * Get your students safely to and from the bus stop. Students should be at the stop no fewer than five minutes and no more than 10 minutes before the scheduled time.
- * Be with your students at the stop to monitor behavior and assist with safety. Have your students wait for the bus at a safe spot off the road and always watch traffic.
- * Have a backup plan in case the bus is delayed. Drivers will run routes as scheduled. However, delays may occur if snow-plows are unable to keep the roads clear or difficulties arise. Please do not let your students remain at a stop for more than 15 minutes after scheduled time.
- * Please submit concerns about suspicious activity, wild animals, bus stop locations and so on in writing to your school.

**HAVE A SAFE AND HAPPY
HOLIDAY!!**

